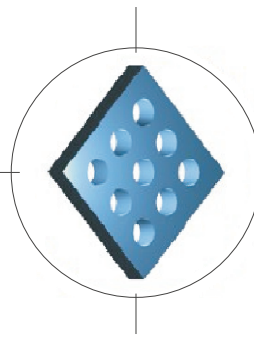


durch

dick
und
dünn



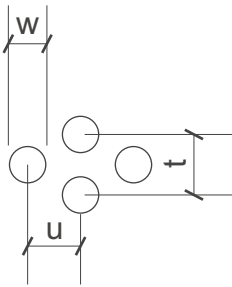
SHS

Lochbleche Butzbach GmbH

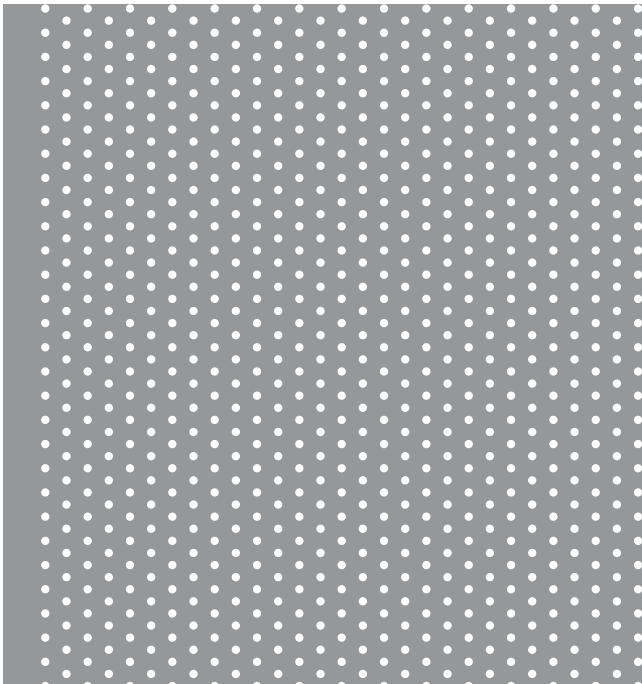
Telefon +49 (0) 6033 - 9646 -0

Telefax +49 (0) 6033 - 9646-30

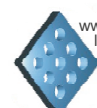
welcome@lochblech.de



Rv 1,1-3,2 w=1,1mm t=3,2mm u=2,8mm open Area 11 % n = 110000/m²



www.wir-wollen-
draussen-
bleiben.de



www.
lochblech.de



DIN EN ISO 9001:2000
Reg.-Nr. 73 100 846