

durch

**dick**  
und  
**dünn**



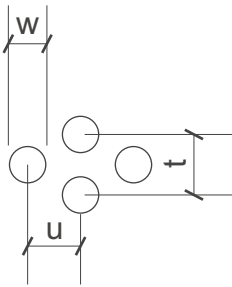
# SHS

**Lochbleche Butzbach GmbH**

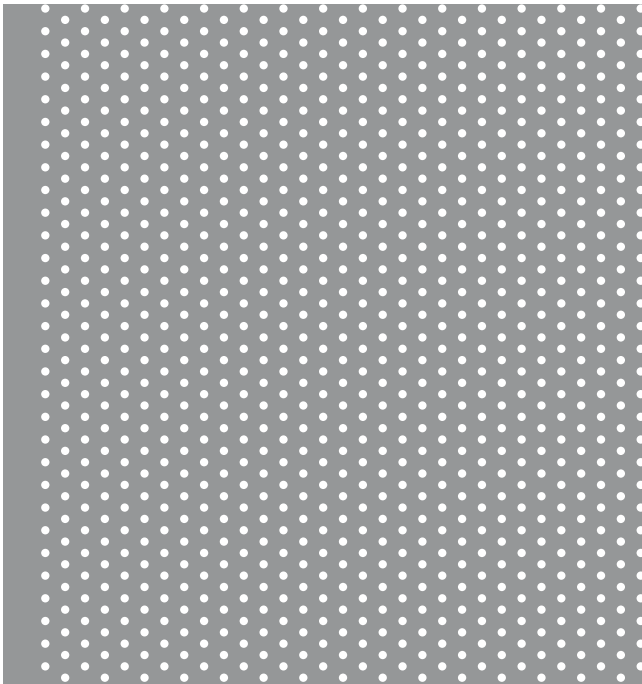
Telefon +49 (0) 6033 - 9646 -0

Telefax +49 (0) 6033 - 9646-30

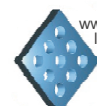
welcome@lochblech.de



Rv 1,1-3 w=1,1mm t=3mm u=2,625mm open Area 12 % n = 130000/m<sup>2</sup>



www.wir-wollen-  
draussen-  
bleiben.de



www.  
lochblech.de



DIN EN ISO 9001:2000  
Reg.-Nr. 73 100 846