

durch

dick
und
dünn



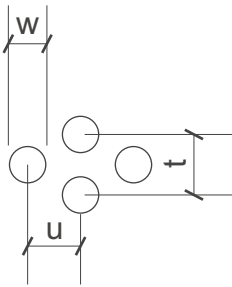
SHS

Lochbleche Butzbach GmbH

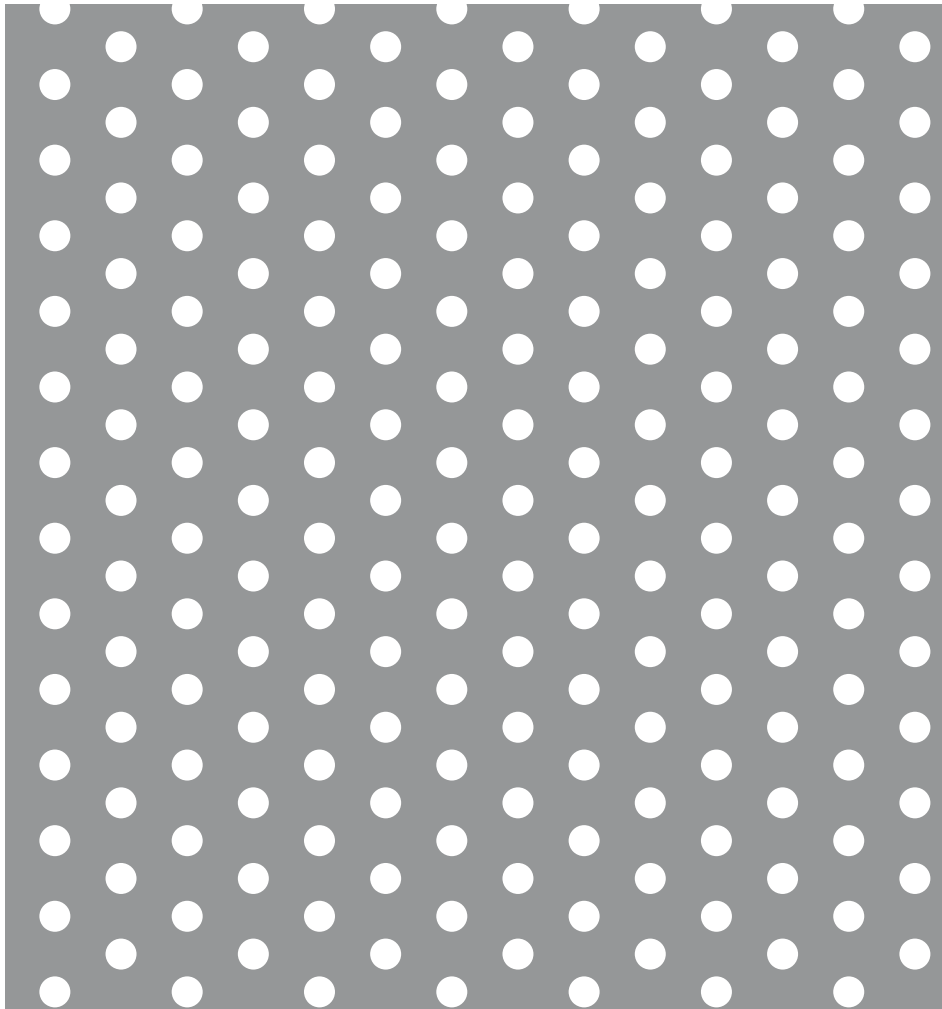
Telefon +49 (0) 6033 - 9646 -0

Telefax +49 (0) 6033 - 9646-30

welcome@lochblech.de



Rv 4,1-10 w=4,1mm t=10mm u=8,75mm open Area 15 % n = 10000/m²



DIN EN ISO 9001:2000
Reg.-Nr. 73 100 846