

durch

**dick**  
und  
**dünn**



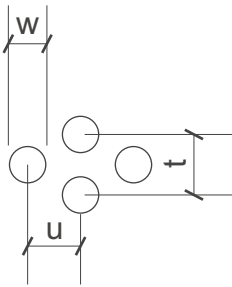
# SHS

**Lochbleche Butzbach GmbH**

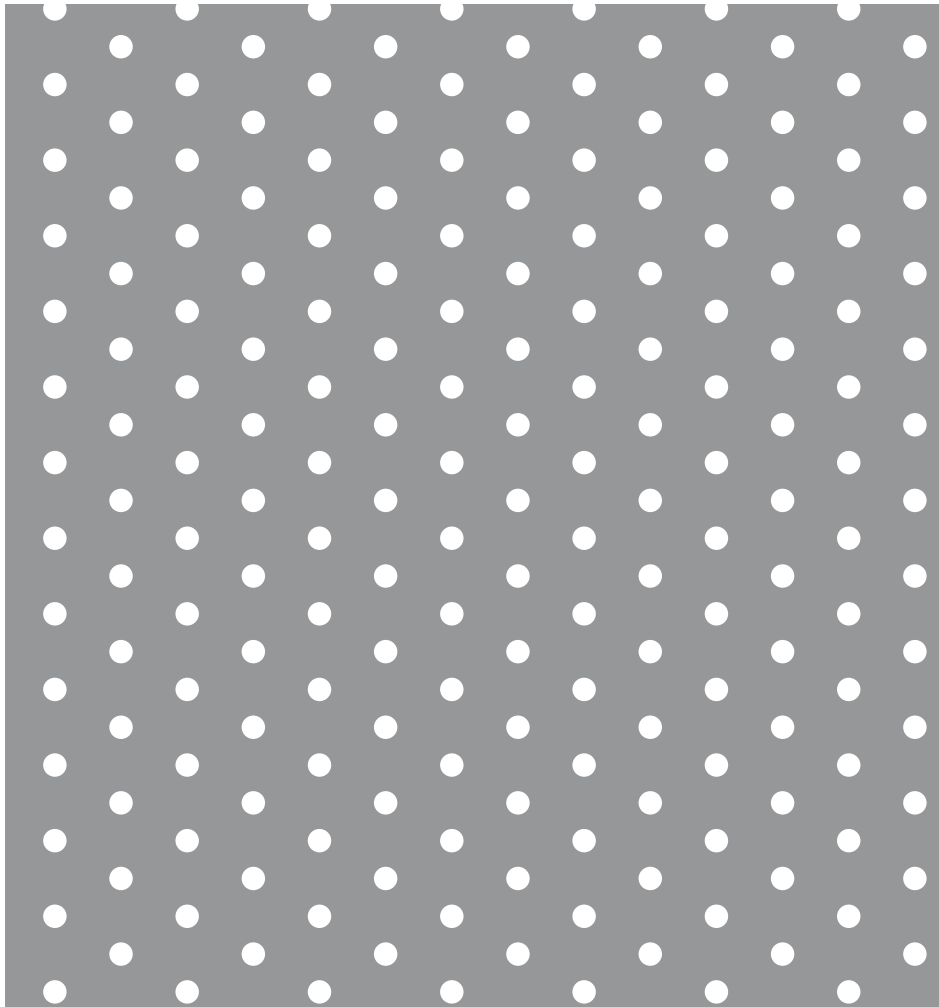
Telefon +49 (0) 6033 - 9646 -0

Telefax +49 (0) 6033 - 9646-30

welcome@lochblech.de



Rv 3,1-10 w=3,1mm t=10mm u=8,75mm open Area 9 % n = 10000/m<sup>2</sup>



DIN EN ISO 9001:2000  
Reg.-Nr. 73 100 846