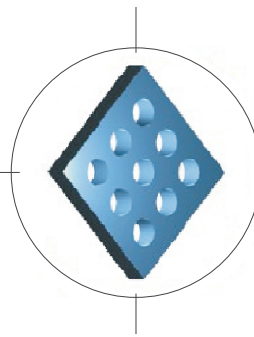


durch

dick
und
dünn



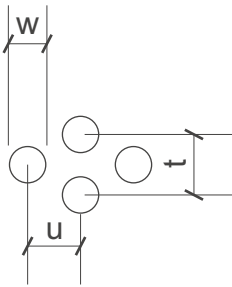
SHS

Lochbleche Butzbach GmbH

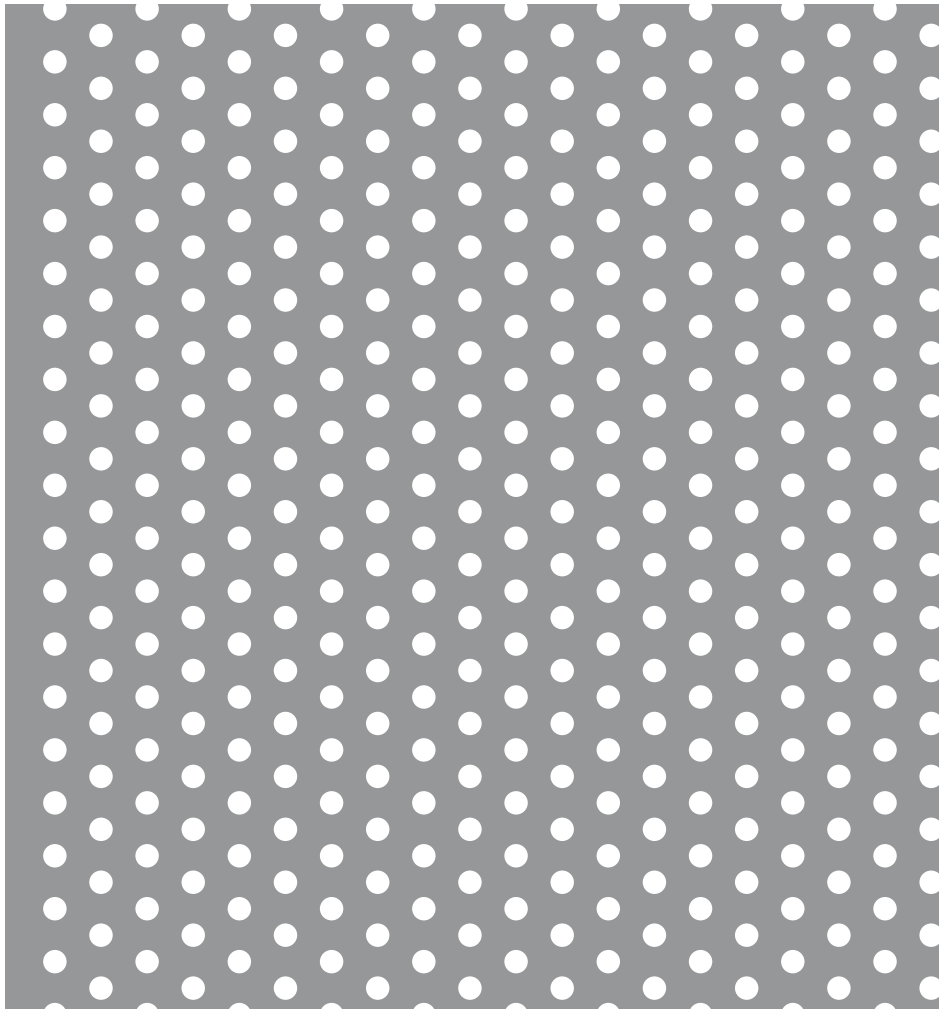
Telefon +49 (0) 6033 - 9646 -0

Telefax +49 (0) 6033 - 9646-30

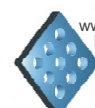
welcome@lochblech.de



Rv 3,1-7 w=3,1mm t=7mm u=6,1mm open Area 17 % n = 20000/m²



www.wir-wollen-
draussen-
bleiben.de



www.
lochblech.de



DIN EN ISO 9001:2000
Reg.-Nr. 73 100 846