

durch

**dick**  
und  
**dünn**



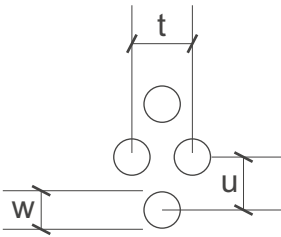
# SHS

**Lochbleche Butzbach GmbH**

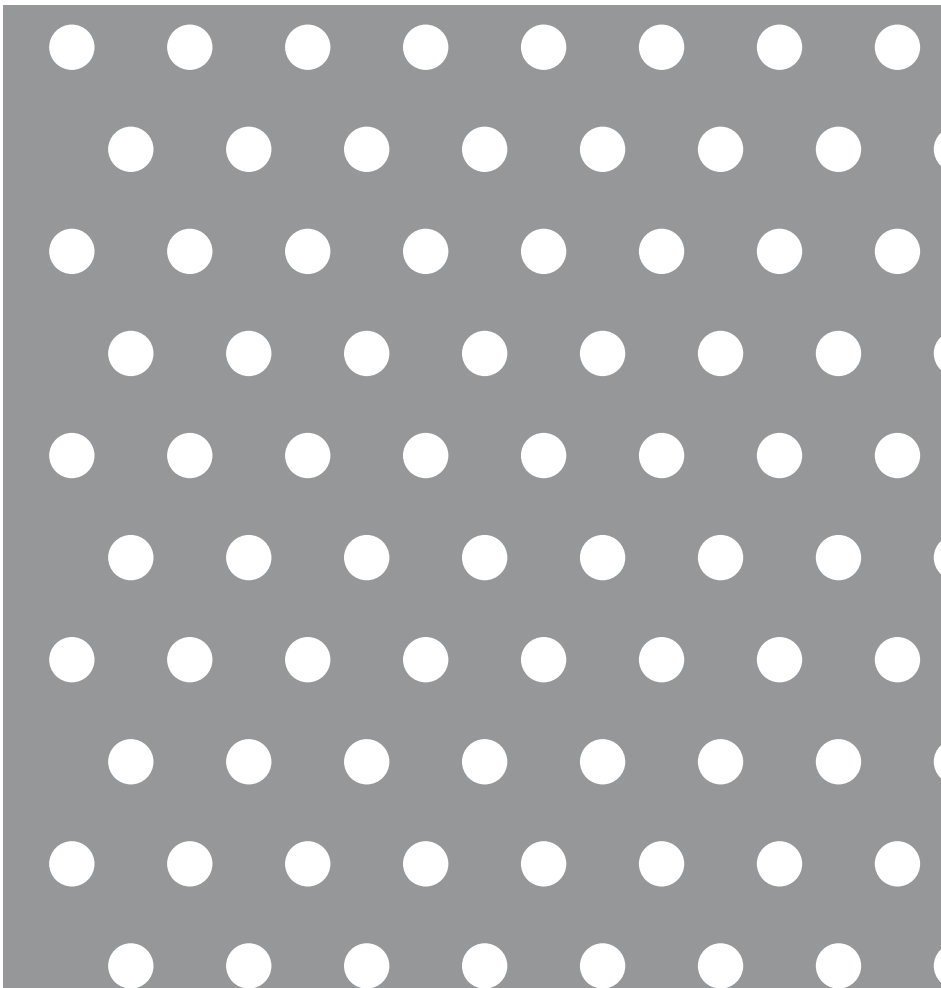
Telefon +49 (0) 6033 - 9646 -0

Telefax +49 (0) 6033 - 9646-30

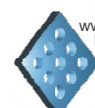
welcome@lochblech.de



Rv 6-15,6 w=6mm t=15,6mm u=13,5mm open Area 13,4 % n = 4700/m<sup>2</sup>



www.wir-wollen-  
draussen-  
bleiben.de



www.  
lochblech.de



DIN EN ISO 9001:2000  
Reg.-Nr. 73 100 846